



## Directions to Pontefract Hub

### Address

**1 Horsefair  
Pontefract  
WF8 1PE**

### Phone

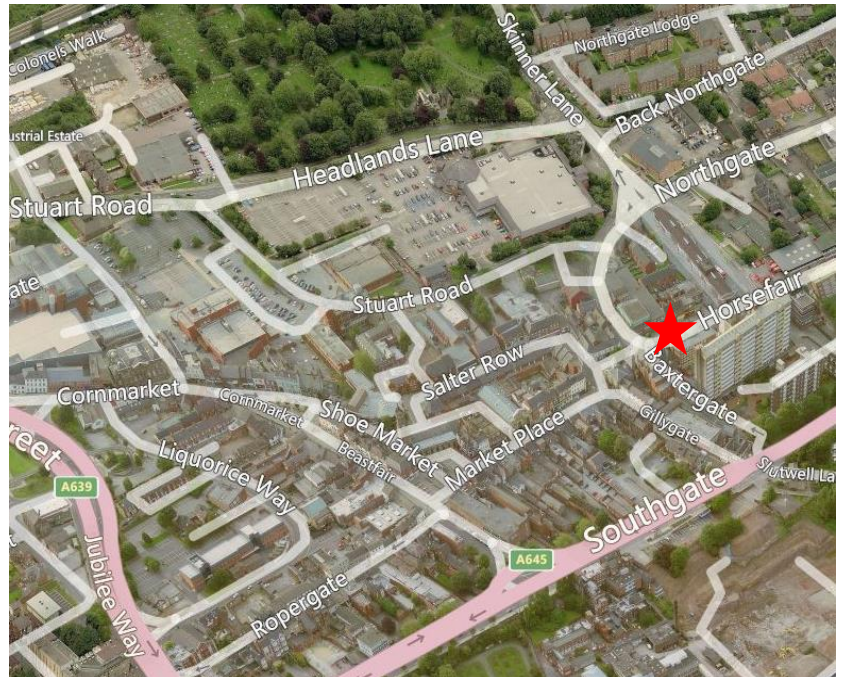
**0345 8 507 507**

### Opening times

<b>Monday</b>	<b>9 – 16:30</b>
<b>Tuesday</b>	<b>9 – 16:30</b>
<b>Wednesday</b>	<b>9 – 16:30</b>
<b>Thursday</b>	<b>10 – 16:30</b>
<b>Friday</b>	<b>9 – 16:30</b>
<b>Saturday</b>	<b>9 – 12 noon</b>

### From A1 Ferrybridge Motorway Services Area

- Leave services and bear right on to Cattlelaith Lane.
- Enter roundabout and take 4th exit on to slip road and merge on to M62.
- Leave at junction 32, take slip road to A639 towards Castleford / Pontefract.
- At roundabout, take 1st exit on to A639 / Park Road.
- At roundabout, take 3rd exit. Continue A639 - Turn left onto Stuart Road.
- Road turns into Headlands Lane, turn right onto Skinner Lane.
- Turn right onto Northgate Follow the road round.
- At the traffic lights your destination is to your left.



### Parking

Pay and display spaces are available opposite the service access point. Parking is also available at the Morrison or Tesco Supermarket. Disable parking bays are available in both these locations.

### Bus and Train Access

Pontefract Bus Station is a two minute walk from the office.  
Tanshelf, Monkhill and Baghill train stations service the town.